
Motorola AIS

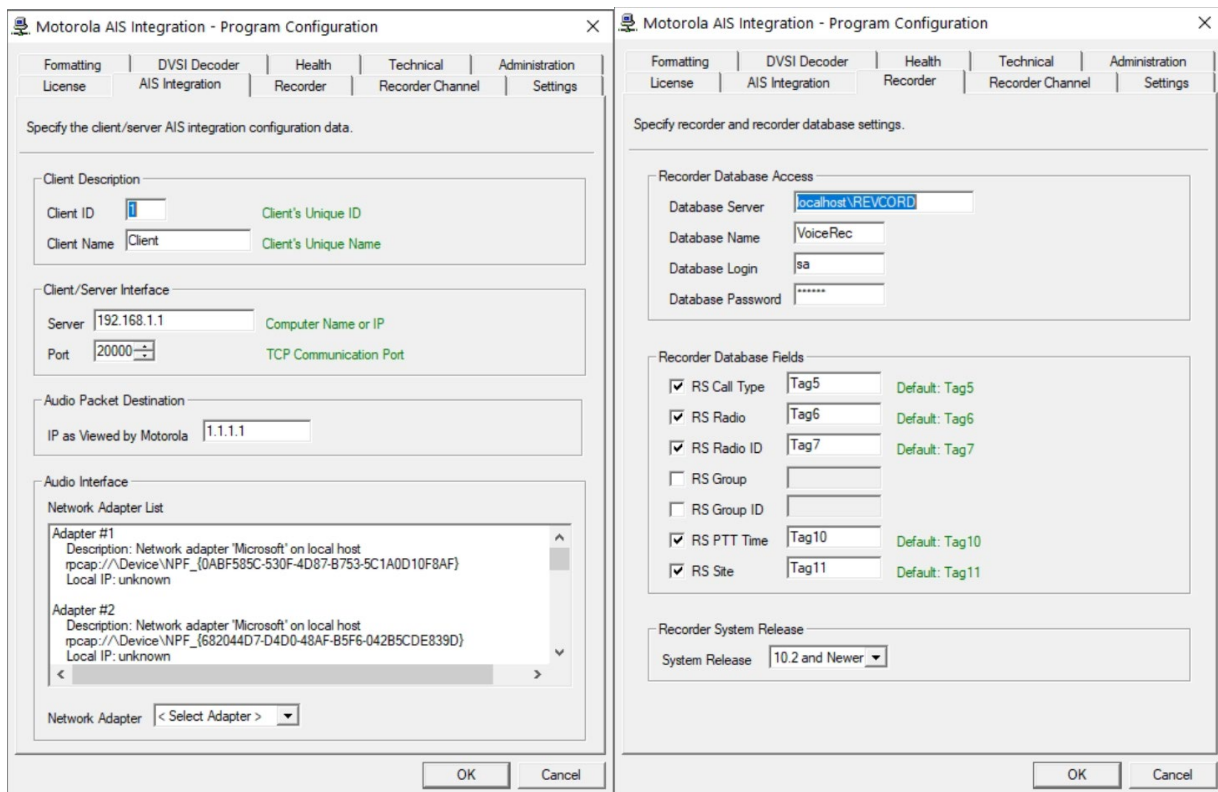
Backup Server/Secondary Server Integration

Knowledge Based Article

MMS Version 12.0
Revision 10.2022

HOW DOES THE BACKUP RECORDER WILL WORK?

1. The AIS Client will be configured on both the Recorders as usual. Here are the details of the configuration.
2. Configuration Required on both Primary and Backup: AIS Server IP, AIS Server Port, AIS Network Interface, Logger Database Info, DVSI Decoder, etc.

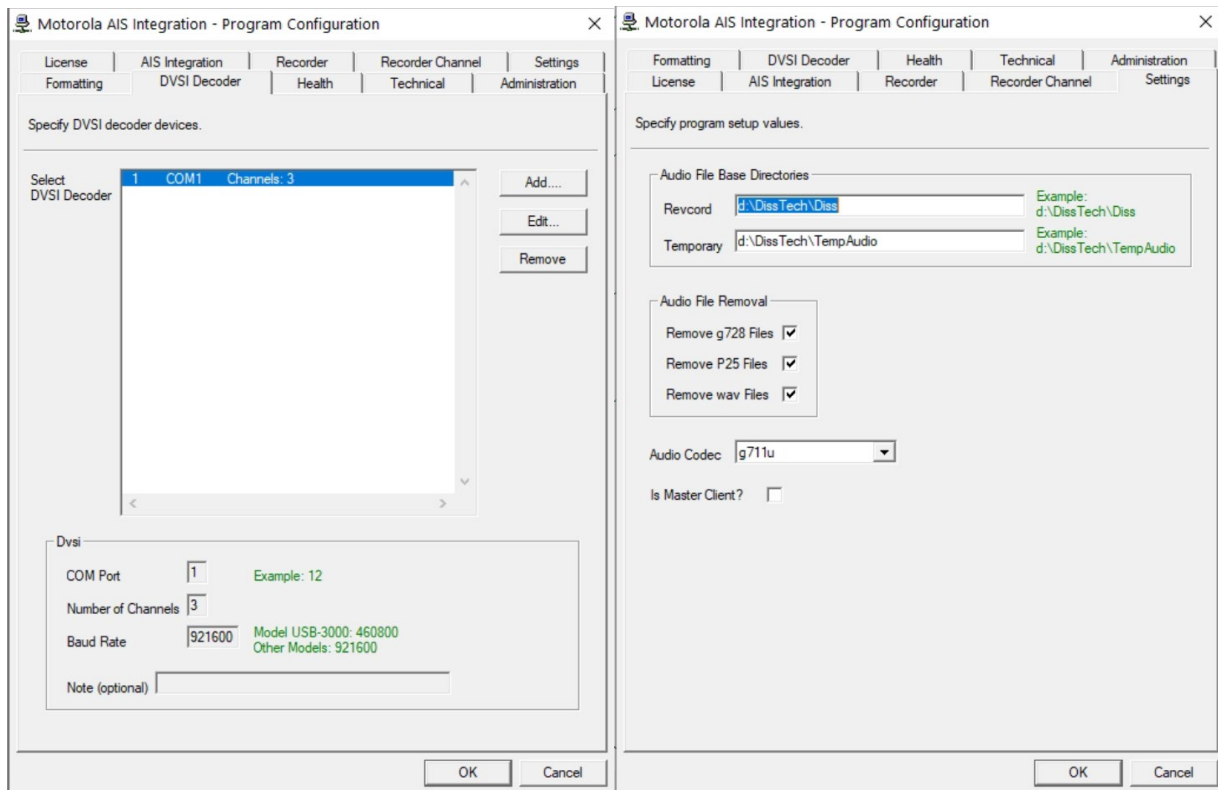


The image displays two side-by-side screenshots of the 'Motorola AIS Integration - Program Configuration' dialog box. The left window is titled 'Specify the client/server AIS integration configuration data.' and contains the following sections:

- Client Description:** Client ID (input field), Client Name (input field).
- Client/Server Interface:** Server (input field: 192.168.1.1), Port (input field: 20000).
- Audio Packet Destination:** IP as Viewed by Motorola (input field: 1.1.1.1).
- Audio Interface:** Network Adapter List (scrollable list with Adapter #1 and Adapter #2 details), Network Adapter (dropdown menu).

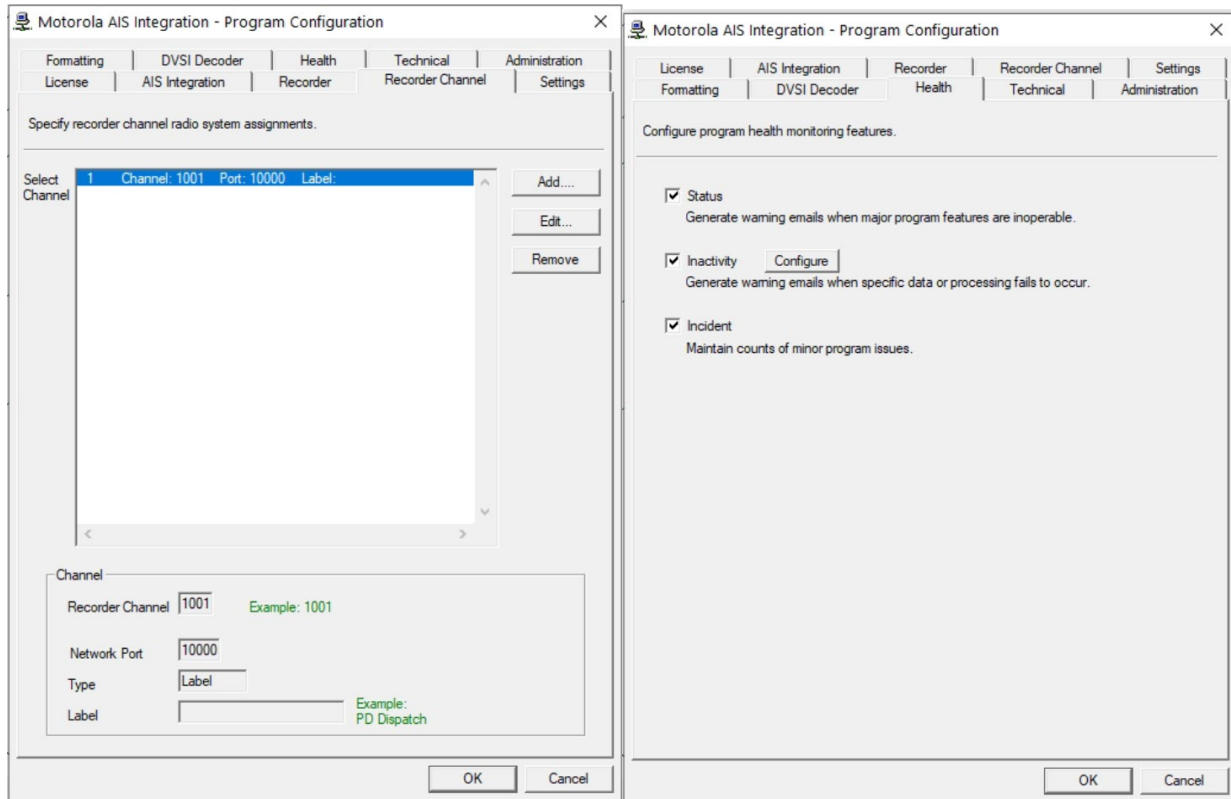
The right window is titled 'Specify recorder and recorder database settings.' and contains the following sections:

- Recorder Database Access:** Database Server (input field: localhost\REVCORD), Database Name (input field: VoiceRec), Database Login (input field: sa), Database Password (input field: *****).
- Recorder Database Fields:**
 - RS Call Type (input field: Tag5, Default: Tag5)
 - RS Radio (input field: Tag6, Default: Tag6)
 - RS Radio ID (input field: Tag7, Default: Tag7)
 - RS Group (input field:)
 - RS Group ID (input field:)
 - RS PTT Time (input field: Tag10, Default: Tag10)
 - RS Site (input field: Tag11, Default: Tag11)
- Recorder System Release:** System Release (dropdown menu: 10.2 and Newer).



Note: On the Primary recorder, Is Master Client flag must be checked.

3. The Talkgroup and alerts configuration must be done on the Primary recorder only. On the Backup recorder there is no need to do those configurations.
4. These configurations will automatically be transferred to the Backup Recorder by the AIS Server in case the Primary server is inaccessible, down or any other network failure.



5. There is an additional configuration file that will be transferred and responsible for all the configurations on the Backup Recorder.
6. **C:\Revcord\AisClient\AisClient-Master-Config.ini**
7. The Master AIS Client periodically transfers this file to the AIS Server (every 15 minutes) and when started, to make sure the latest configuration is always available with the AIS Server.
8. When the Master AIS Client goes down, the AIS Server waits for 2 minutes; if not accessible again in 2 minutes, it sends the configuration file to the Backup recorder and makes it active.
9. When AIS Client is active it re-initializes the Talk groups recording and now the AIS calls will be recorded on the backup server.